

Innovative Stent Design with Flexibility and Strength

## Excellent Conformance with Vessel wall



- "S" shaped links optimize radial strength and metal to artery ratio for vessel support and provides better arterial support

## Reduced Injury of Edges



- I-Sync has innovative hybrid cell design which ensures even distribution of inflation pressure of the balloon with uniform stent expansion

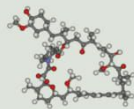
## 65µm Strut Thickness

65 µm strut thickness  
Cobalt Chromium stent

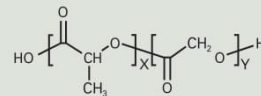


- High performance shaft consisting of a material which provides excellent Pushability and Kink resistance. This feature allows for high manoeuvrability.
- The soft tip material combined with an improved robust segment ensures perfect Crossability and Trackability. This feature allows easy access to all lesions.

The successful delivery, efficacy and safety through the combination of proven drug and reliable polymer.



Most proven drug,  
Low drug dose



Biodegradable and Biocompatible polymer  
PLGA

An ISO 9001 & ISO 13485 Certified Company.  
Mfg. Lic. No. MFG/MD/2019/000008

Manufactured By:  
MIV Therapeutics (India) Pvt. Ltd.  
136-B, Surat Special Economic Zone,  
Diamond Park, GIDC Sachin,  
Surat- 394230, Gujarat (India)  
T: +91 9099919641  
E: info@mivtindia.com  
W: www.mivtindia.com



**MIV**  
THERAPEUTICS (I) PVT. LTD.

Promising Wellbeing...

## Innovative Stent Design with Flexibility and Strength

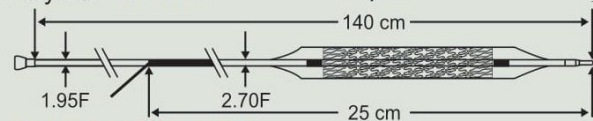
### TECHNICAL SPECIFICATIONS

#### STENT

Stent Material	: Cobalt Chromium L605
Strut Thickness	: 65 µm (0.065 mm or 0.0026")
Stent Diameters (mm)	: 2.25, 2.50, 2.75, 3.00, 3.50, 4.00, 4.50
Stent Lengths (mm)	: 8, 13, 16, 19, 24, 29, 32, 37, 40, 43, 44, 47, 48
Recoil	: Average 3.2 %
Percentage Forshortening	: Nearly Zero
Design	: Uniform sinusoidal cell design
6 Crowns and 3 interlink	: 2.25, 2.50, 2.75 mm
8 Crowns and 4 interlink	: 3.00, 3.50, 4.00, 4.50 mm

#### DRUG / POLYMER

Drug	: Everolimus
Equivalent Drug Dose	: 1.20 µg / mm <sup>2</sup>
Polymer	: Biodegradable and Biocompatible
Polymer Thickness	: 3 µm



#### DELIVERY SYSTEM

Delivery System	: Rapid Exchange
Nominal Pressure	: 9 ATM
Rated Burst Pressure	: 16 ATM
	* 14 ATM for 4.50 mm diameter, 3.50 mm diameter with length >35 mm and 4.00 mm diameter with length >30 mm
Balloon Overhang	: < 0.3 mm
Shaft Outer Diameter	: Proximal 1.95 F / Distal 2.7 F / Hydrophilic coating
Radiopaque Markers	: 2 Platinum / Iridium
Usable Catheter Length	: 140 cm
Guide Catheter Compatibility	: 5 F
Min. Guide Catheter I.D.	: 0.056" / 1.42 mm
Max. Guidewire	: 0.014" (0.036 mm)

#### ORDERING INFORMATION (Reference Code)

Stent Diameters (mm)	Stent Lengths (mm)												
	8	13	16	19	24	29	32	37	40	43	44	47	48
2.25	AC4.1 2.2508	AC4.1 2.2513	AC4.1 2.2516	AC4.1 2.2519	AC4.1 2.2524	AC4.1 2.2529	AC4.1 2.2532	AC4.1 2.2537	AC4.1 2.2540	AC4.1 2.2543	AC4.1 2.2544	AC4.1 2.2547	AC4.1 2.2548
2.50	AC4.1 2.5008	AC4.1 2.5013	AC4.1 2.5016	AC4.1 2.5019	AC4.1 2.5024	AC4.1 2.5029	AC4.1 2.5032	AC4.1 2.5037	AC4.1 2.5040	AC4.1 2.5043	AC4.1 2.5044	AC4.1 2.5047	AC4.1 2.5048
2.75	AC4.1 2.7508	AC4.1 2.7513	AC4.1 2.7516	AC4.1 2.7519	AC4.1 2.7524	AC4.1 2.7529	AC4.1 2.7532	AC4.1 2.7537	AC4.1 2.7540	AC4.1 2.7543	AC4.1 2.7544	AC4.1 2.7547	AC4.1 2.7548
3.00	AC4.1 3.0008	AC4.1 3.0013	AC4.1 3.0016	AC4.1 3.0019	AC4.1 3.0024	AC4.1 3.0029	AC4.1 3.0032	AC4.1 3.0037	AC4.1 3.0040	AC4.1 3.0043	AC4.1 3.0044	AC4.1 3.0047	AC4.1 3.0048
3.50	AC4.1 3.5008	AC4.1 3.5013	AC4.1 3.5016	AC4.1 3.5019	AC4.1 3.5024	AC4.1 3.5029	AC4.1 3.5032	AC4.1 3.5037	AC4.1 3.5040	AC4.1 3.5043	AC4.1 3.5044	AC4.1 3.5047	AC4.1 3.5048
4.00	AC4.1 4.0008	AC4.1 4.0013	AC4.1 4.0016	AC4.1 4.0019	AC4.1 4.0024	AC4.1 4.0029	AC4.1 4.0032	AC4.1 4.0037	AC4.1 4.0040	AC4.1 4.0043	AC4.1 4.0044	AC4.1 4.0047	AC4.1 4.0048
4.50	AC4.1 4.5008	AC4.1 4.5013	AC4.1 4.5016	AC4.1 4.5019	AC4.1 4.5024	AC4.1 4.5029	AC4.1 4.5032	AC4.1 4.5037	AC4.1 4.5040	AC4.1 4.5043	AC4.1 4.5044	AC4.1 4.5047	AC4.1 4.5048

Note: Other sizes are available upon special request.