

Innovative Stent Design with Flexibility and Strength

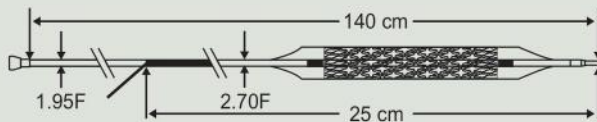
TECHNICAL SPECIFICATIONS

STENT

Stent Material	: Cobalt Chromium L605
Strut Thickness	: 65 μm (0.065 mm or 0.0026")
Stent Diameters (mm)	: 2.00 , 2.25 , 2.50 , 2.75 , 3.00 , 3.50 , 4.00 , 4.50
Crossing profile (mm)	: 1.115*
Stent Lengths (mm)	: 16, 19, 24, 29, 32, 37, 40, 43, 48
Recoil	: Average 3.2 %
Percentage Forshortening	: \pm 1.3 %

DRUG / POLYMER

Drug	: Everolimus
Equivalent Drug Dose	: 1.00 μg / mm^2
Polymer	: Biodegradable and Biocompatible



DELIVERY SYSTEM

Delivery System	: Rapid Exchange
Nominal Pressure	: 9 ATM
Rated Burst Pressure	: 16 ATM
	* 14 ATM for 3.50x38, 3.50x41, 4.00x33, 4.00x38, 4.00x41, 4.50x33, 4.50x38 and 4.50x41mm
Balloon Overhang	: < 0.3 mm
Shaft Outer Diameter	: Proximal 1.95 F / Distal 2.7 F
Radiopaque Markers	: 2 Platinum / Iridium
Usable Catheter Length	: 140 cm
Guide Catheter Compatibility	: 5 F
Min. Guide Catheter I.D.	: 0.056" / 1.42 mm
Max. Guidewire	: 0.014" (0.036 mm)

ORDERING INFORMATION (Reference Code)

Stent Diameters (mm)	Stent Lengths (mm)								
	16	19	24	29	32	37	40	43	48
2.25	AC4.1 2.2516	AC4.1 2.2519	AC4.1 2.2524	AC4.1 2.2529	AC4.1 2.2532	AC4.1 2.2537	AC4.1 2.2540	AC4.1 2.2543	AC4.1 2.2548
2.50	AC4.1 2.5016	AC4.1 2.5019	AC4.1 2.5024	AC4.1 2.5029	AC4.1 2.5032	AC4.1 2.5037	AC4.1 2.5040	AC4.1 2.5043	AC4.1 2.5048
2.75	AC4.1 2.7516	AC4.1 2.7519	AC4.1 2.7524	AC4.1 2.7529	AC4.1 2.7532	AC4.1 2.7537	AC4.1 2.7540	AC4.1 2.7543	AC4.1 2.7548
3.00	AC4.1 3.0016	AC4.1 3.0019	AC4.1 3.0024	AC4.1 3.0029	AC4.1 3.0032	AC4.1 3.0037	AC4.1 3.0040	AC4.1 3.0043	AC4.1 3.0048
3.50	AC4.1 3.5016	AC4.1 3.5019	AC4.1 3.5024	AC4.1 3.5029	AC4.1 3.5032	AC4.1 3.5037	AC4.1 3.5040	AC4.1 3.5043	AC4.1 3.5048
4.00	AC4.1 4.0016	AC4.1 4.0019	AC4.1 4.0024	AC4.1 4.0029	AC4.1 4.0032	AC4.1 4.0037	AC4.1 4.0040	AC4.1 4.0043	AC4.1 4.0048

Note: Other sizes are available upon special request.
 * : Measurement applies to the 3.00mm diameter stent system

BPES/BRO/2016/1001_01

Innovative Stent Design with Flexibility and Strength

Excellent Conformance with Vessel wall



- "S" shaped links optimize radial strength and metal to artery ratio for vessel support and provides better arterial support

Reduced Injury of Edges



- I-Sync has innovative hybrid cell design which ensures even distribution of inflation pressure of the balloon with uniform stent expansion

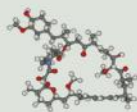
65µm Strut Thickness

65 µm strut thickness
Cobalt Chromium stent

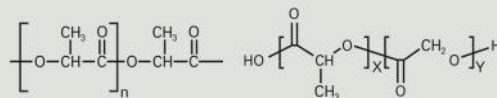


- High performance shaft consisting of a material which provides excellent Pushability and Kink resistance. This feature allows for high manoeuvrability.
- The soft tip material combined with an improved robust segment ensures perfect Crossability and Trackability. This feature allows easy access to all lesions.

The successful delivery, efficacy and safety through the combination of proven drug and reliable polymer.



Most proven drug,
Low drug dose



Biodegradable and Biocompatible polymer
PLA and PLGA

An ISO 9001, ISO 13485 and GMP Certified Company.
Manufacturing Licence No. G/28/1261

Manufactured By:
MIV Therapeutics (India) Pvt. Ltd.
136-B, Surat Special Economic Zone,
Diamond Park, GIDC Sachin,
Surat- 394230, Gujarat (India)
T: +91 261 2397066
E: info@mivindia.com
W: www.mivindia.com



Promising Wellbeing...