

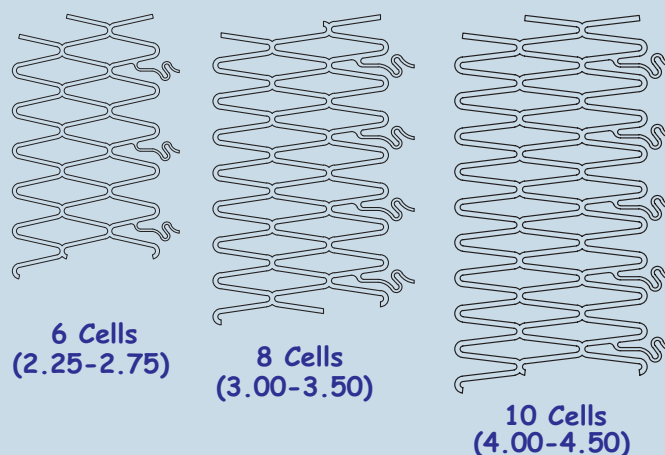
Advanced Delivery System for excellent Flexibility and Perfection

GENXSYNC PLUS ASSIST THE CARDIOLOGIST

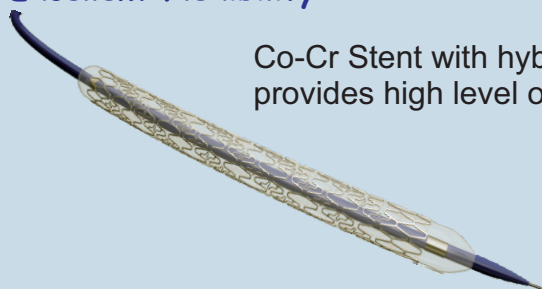
with an excellent, unsurpassed tracking performance with advanced delivery system and Hydrophilic coated shaft.

Advanced Stent architecture

The technically high standard of stent cell architecture which ensures the best possible intracoronary stenting stability and minimizes stenting trauma and restenosis.



Excellent Flexibility



Co-Cr Stent with hybrid cell design and advanced delivery system with low tip profile provides high level of Flexibility to access the most tortuous lesion.

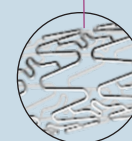
Advanced Pushability and Deliverability

Advanced stent engineering provides excellent Pushability and Deliverability for crossing difficult lesions with impressive structural performance.

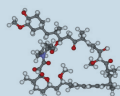
Thin Strut Design (65 µm)

Thin strut design promotes rapid healing and optimal performance in small vessel stenting.

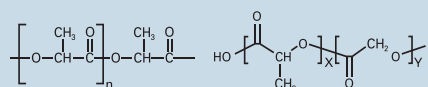
65 µm strut thickness with alternative "S" link offers excellent Flexibility and Deliverability



The successful delivery, efficacy and safety through the combination of proven drug and reliable polymer.



Most proven drug,
Low drug dose



Biodegradable and Biocompatible polymer
PLA and PLGA

An ISO 9001, ISO 13485 and GMP Certified Company.
Manufacturing Licence No. G/28/1261

Manufactured By:
MIV Therapeutics (India) Pvt. Ltd.
136-B, Surat Special Economic Zone,
Diamond Park, GIDC Sachin,
Surat- 394230, Gujarat (India)
T: +91 261 2397066
E: info@mivtindia.com
W: www.mivtindia.com



Promising Wellbeing...

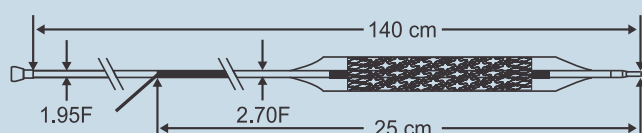
TECHNICAL SPECIFICATION

STENT

Stent Material	: Cobalt Chromium L605
Strut Thickness	: 65 µm (0.065 mm or 0.0026")
Stent Diameters (mm)	: 2.00, 2.25, 2.50, 2.75, 3.00, 3.50, 4.00, 4.50
Stent Lengths (mm)	: 8, 13, 16, 19, 24, 29, 32, 37, 40
Recoil	: Average 3.2 %
Percentage Forshortening	: ± 1.3 %

DRUG / POLYMER

Drug	: Sirolimus
Equivalent Drug Dose	: 1.33 µg / mm ²
Polymer	: Biodegradable and Biocompatible



DELIVERY SYSTEM

Delivery System	: Rapid Exchange
Nominal Pressure	: 9 ATM
Rated Burst Pressure	: 16 ATM
	* 14 ATM for 3.50x37, 3.50x40, 4.00x32, 4.00x37, 4.00x40, 4.50x32, 4.50x37 and 4.50x40mm
Balloon Overhang	: < 0.3 mm
Shaft Outer Diameter	: Proximal 1.95 F / Distal 2.7 F
Radiopaque Markers	: 2 Platinum / Iridium
Usable Catheter Length	: 140 cm
Guide Catheter Compatibility	: 5 F
Min. Guide Catheter I.D.	: 0.056" / 1.42 mm
Max. Guidewire	: 0.014" (0.036 mm)

ORDERING INFORMATION (Reference Code)

Stent Diameters (mm)	Stent Lengths (mm)								
	8	13	16	19	24	29	32	37	40
2.25	BC2.1 2.2508	BC2.1 2.2513	BC2.1 2.2516	BC2.1 2.2519	BC2.1 2.2524	BC2.1 2.2529	BC2.1 2.2532	BC2.1 2.2537	BC2.1 2.2540
2.50	BC2.1 2.5008	BC2.1 2.5013	BC2.1 2.5016	BC2.1 2.5019	BC2.1 2.5024	BC2.1 2.5029	BC2.1 2.5032	BC2.1 2.5037	BC2.1 2.5040
2.75	BC2.1 2.7508	BC2.1 2.7513	BC2.1 2.7516	BC2.1 2.7519	BC2.1 2.7524	BC2.1 2.7529	BC2.1 2.7532	BC2.1 2.7537	BC2.1 2.7540
3.00	BC2.1 3.0008	BC2.1 3.0013	BC2.1 3.0016	BC2.1 3.0019	BC2.1 3.0024	BC2.1 3.0029	BC2.1 3.0032	BC2.1 3.0037	BC2.1 3.0040
3.50	BC2.1 3.5008	BC2.1 3.5013	BC2.1 3.5016	BC2.1 3.5019	BC2.1 3.5024	BC2.1 3.5029	BC2.1 3.5032	BC2.1 3.5037	BC2.1 3.5040
4.00	BC2.1 4.0008	BC2.1 4.0013	BC2.1 4.0016	BC2.1 4.0019	BC2.1 4.0024	BC2.1 4.0029	BC2.1 4.0032	BC2.1 4.0037	BC2.1 4.0040

Note: Other sizes are available upon special request.

BPSS/BRO/20171001_02